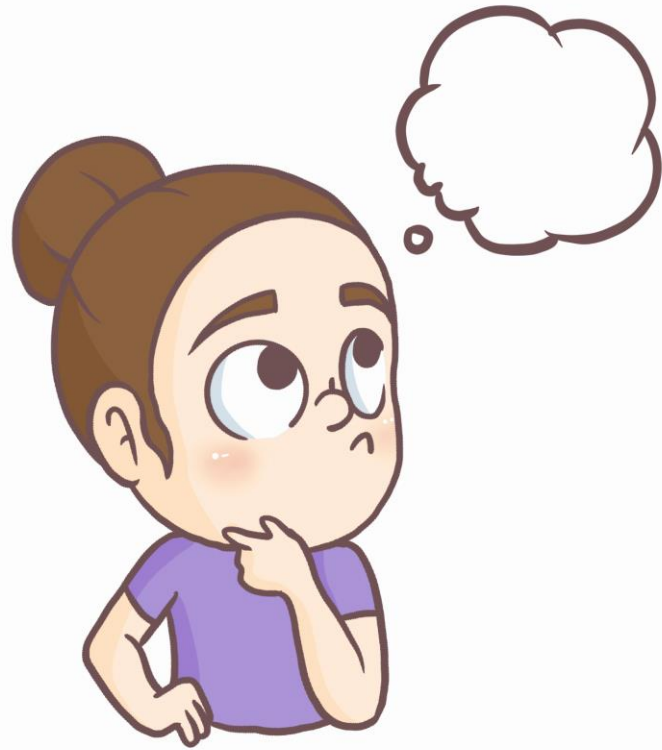


A stylized, colorful illustration of a landscape. The foreground features rolling green hills with varying shades of green and brown soil. On the left, there is a green tree, a purple flower, and an orange flower. A small red bird is flying in the sky above the tree. The background consists of light blue and white wavy lines representing a sky or distant hills.

# *PLANTS PROCESSES*

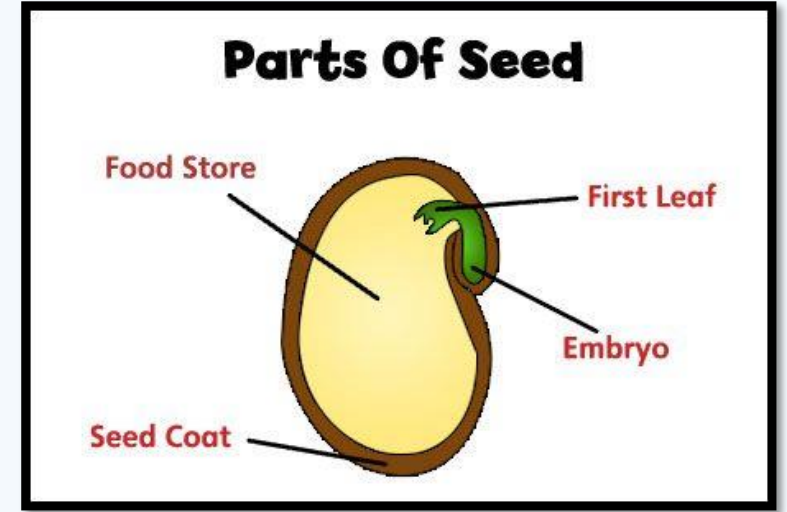


LET'S REVIEW  
SOME CONTENTS

Do you remember....?

# SEED PLANTS

- Reproduce with seeds



- There are 2 types:
  - Gymnosperms
  - Angiosperms





# GYMNOSPERMS

- Evergreen trees and shrubs  
(Pine trees, cypresses and firs)



- The leaves are needle or  
scaled-shaped



# ANGIOSPERMS

- Flowering plants, these plants produce flowers and fruits.



- They can be deciduous and evergreen trees, shrub and grasses.



(Apple trees, lavender, Grass and tulips)



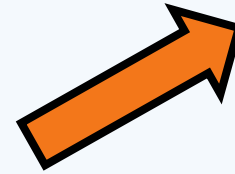
# NON-SEED PLANTS

- They reproduce with spores

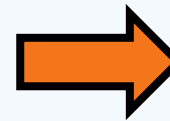


- There are 2 types of non-seed plants:

- Mosses



- Ferns



# Plant's reproduction

Seed plants

Reproduce  
with seeds

Gymnosperms



Angiosperms  
(fruit and flowering plants)



Non-seed  
plants

Reproduce  
with spores

Mosses



Ferns





A stylized illustration of a flowering plant on a green hill under a blue sky. The plant has a brown stem with two small leaves, a cluster of orange and brown buds at the base, and a large, multi-layered flower head with shades of purple and pink. The background features rolling green hills and a sky with wavy blue and white bands.

*What is the life cycle  
of a flowering plant?*



# Almond tree life cycle

